

# MF 210-P SERIES

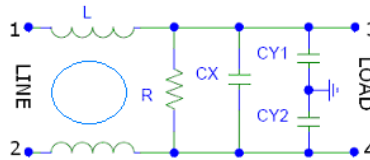


## Features

- Excellent performance/size ratio
- Rated currents up to 16 A
- Medical versions available
- High conducted attenuation performance
- Light Weight

## Technical Specification

- Maximum Operating Voltage: 250 VAC
- Operating Frequency: 50/60Hz
- Rated Current: Upto 16 A
- High Potential test voltage:  
L to G 2120VDC FOR 250V  
L to L 1414VDC FOR 250V
- Overload Capability: 6 x Rated current for 8sec
- Temperature Range :-25 °C to 85 °c
- Earth Leakage Current : 1 mA max  
(Also available in low leakage Current)



## Application

- Washing Machines
- Refrigerators
- Air Conditioner
- Microwave Equipment
- Office Automation Equipment
- Photocopier
- Printers
- Electric test instruments

## Presentation

Plastic

## Mounting

Screw Mount

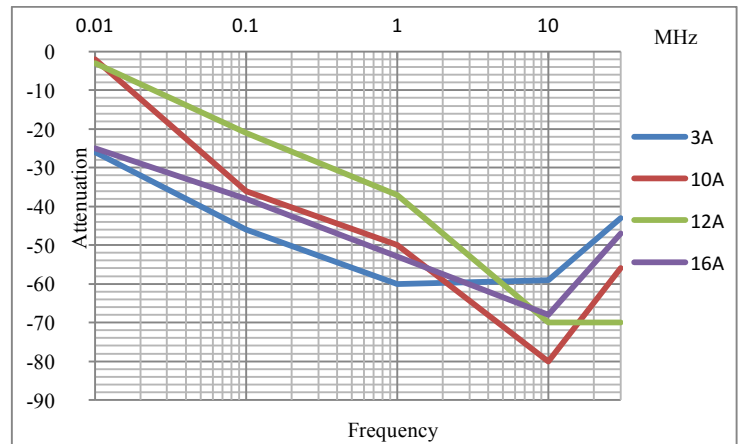
## Termination

Wire/ Fasten 6.3mm

## How to Order

Part No.	Rated Current (Amps)	Case Style	Termination
MF 210-P-03-X	3A	A,B	Fastons/Cable
MF 210-P-06-X	6A	A,B	Fastons/Cable
MF 210-P-10-X	10A	A,B	Fastons/Cable
MF 210-P-12-X	12A	A,B	Fastons/Cable
MF 210-P-16-X	16A	A,B	Fastons/Cable

## Insertion Loss



\*\* For Customised filter Contact our sales department