

MF 300 SERIES



Features

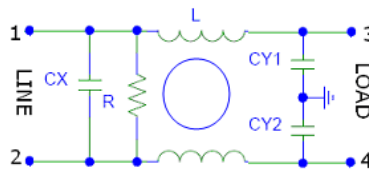
- Excellent performance/size ratio
- Rated currents up to 15 A
- Medical versions available
- High conducted attenuation performance

Application

- Integral IEC Connector
- All IEC Inlet Connector
- Medical application
- Computers
- Test and measurement equipment
- Portable electrical and electronic equipment
- Household equipment
- Rack mounting equipment

Technical Specification

- Maximum Operating Voltage: 250 VAC
- Operating Frequency: 50/60Hz
- Rated Current: 1A to 15 A
- High Potential test voltage:
L to G 2120VDC FOR 250V
L to L 1414VDC FOR 250V
- Overload Capability: 6 x Rated current for 8sec
- Temperature Range : -25 °C to 85 °C
- Earth Leakage Current : 1 mA max
(Also available in low leakage Current)



Presentation

Aluminium

Mounting

Screw Mount or Panel Mount

Termination

Fasten 6.3 X 0.8 mm

How to Order

Part No.	Current Rating (Amps)	Leakage Current (mA)
MF 300-01-X	1A	<1mA
MF 300-02-X	2A	<1mA
MF 300-03-X	3A	<1mA
MF 300-06-X	6A	<1mA
MF 300-10-X	10A	<1mA
MF 300-15-X	15A	<1mA

** For Customised filter Contact our sales department

Insertion Loss

