

MF 320 SERIES

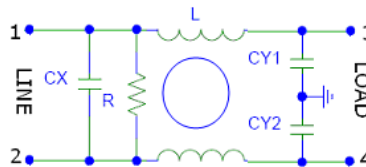


Features

- Integral IEC Connector
- Excellent performance/size ratio
- One or Two Fuse Option
- Double Pole/Single Throw Switch
- Rated currents up to 10 A
- Medical versions available
- High conducted attenuation performance
- Snap-in or Screw Mount

Technical Specification

- Maximum Operating Voltage: 250 VAC
- Operating Frequency: 50/60Hz
- Rated Current: Upto 10 A
- High Potential test voltage:
L to G 2120VDC FOR 250V
L to L 1414VDC FOR 250V
- Overload Capability: 6 x Rated current for 8sec
- Temperature Range :-25 °C to 85 °C
- Earth Leakage Current : 1 mA max
(Also available in low leakage Current)



Application

- Integral IEC Connector
- All IEC Inlet Connector
- Medical application
- Computers
- Test and measurement equipment
- Portable electrical and electronic equipment
- Household equipment
- Rack mounting equipment

Presentation

Nickel Plated metal case/Aluminium

Mounting

Screw Mount or Panel Mount

Termination

Fastons 6.3 X 0.8 mm

How to Order

| Part No. | Current Rating (Amps) | Leakage Current (mA) |
|-------------|-----------------------|----------------------|
| MF 320-01-X | 1A | <1mA |
| MF 320-03-X | 3A | <1mA |
| MF 320-06-X | 6A | <1mA |
| MF 320-10-X | 10A | <1mA |

** For Customised filter Contact our sales department

Insertion Loss

