

# MF 510 SERIES

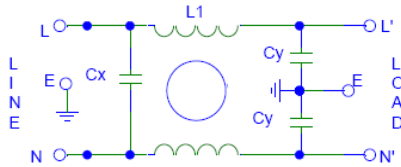


## Features

- Excellent performance/size ratio
- Rated currents up to 6 A
- Medical versions available
- High conducted attenuation performance

## Technical Specification

- Maximum Operating Voltage: 250 VAC
- Operating Frequency: 50/60Hz
- Rated Current: 1A to 6 A
- High Potential test voltage:  
L to G 1500VAC FOR 250V  
L to L 1414VDC FOR 250V
- Overload Capability: 6 x Rated current for 8sec
- Temperature Range :-25 °C to 85 °C
- Earth Leakage Current : 1 mA max  
(Also available in low leakage Current)



## Application

- Printers
- Monitors
- Electric test instruments

## Presentation

Aluminium

## Mounting

Clamp Mounting

## Termination

Fastons 2.3

## How to Order

Part No	Rated Current (Amps)	Leakage Current (mA)
MF 510-01	1A	<1mA
MF 510-03	3A	<1mA
MF 510-06	6A	<1mA

\*\* For Customised filter Contact our sales department

## Insertion Loss

