

MF 530 SERIES

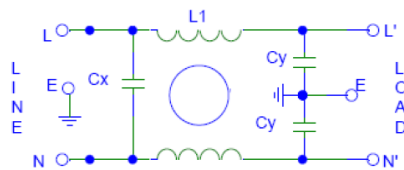


Features

- PCB Mountable Filters
- Rated currents up to 10 A
- Medical versions available
- High conducted attenuation performance
- Plastic housing for standard applications
- Protection against interference voltage
- Cost Effective

Technical Specification

- Maximum Operating Voltage: 250 VAC
- Operating Frequency: 50/60Hz
- Rated Current: Upto 10 A
- High Potential test voltage:
L to G 1500VDC FOR 250V
L to L 1414VDC FOR 250V
- Overload Capability: 6 x Rated current for 8sec
- Temperature Range :-25 °C to 85 °C
- Earth Leakage Current : 1 mA max
(Also available in low leakage Current)



Application

- SMPS
- Monitor
- PLC
- Weighing scales
- Electronic instrument
- PC periphery
- Microwave Equipment
- Office Automation Equipment
- Photocopier
- Printers

Presentation

Plastic

Mounting

PCB Mountable

Termination

Pin or Lead

How to Order

| Part No. | Rated Current (Amps) | Case Style | Termination |
|-----------|----------------------|-------------------------|-------------|
| MF 530-01 | 1A | B/C/D/E | Lead |
| MF 530-03 | 3A | B/C/D/E | Lead |
| MF 530-06 | 6A | B/C/D/E | Lead |
| MF 530-10 | 10A* | B/D | Lead |

*Not covered under CSA/C-US/NEMKO

** For Customised filter Contact our sales department

Insertion Loss

