

MF 530

STYLE: PCB MOUNTABLE

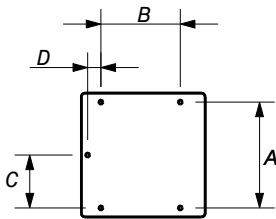
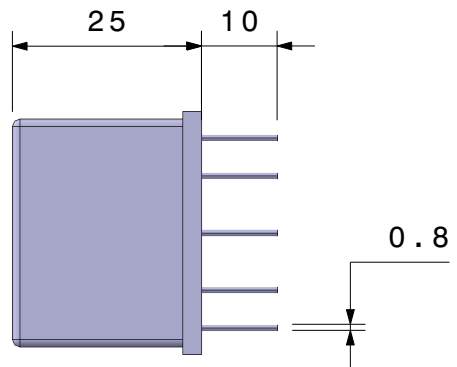
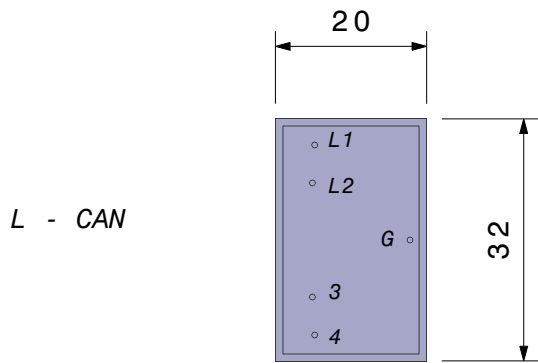
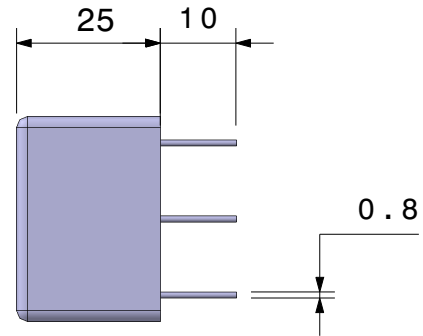
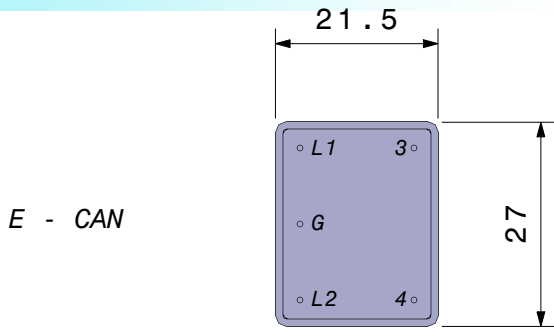


fig:1

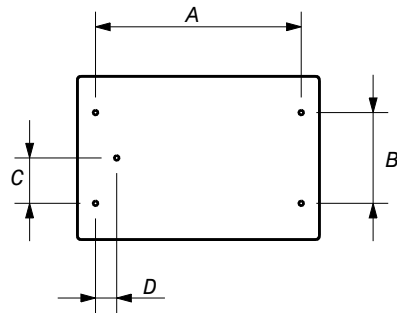


fig:2

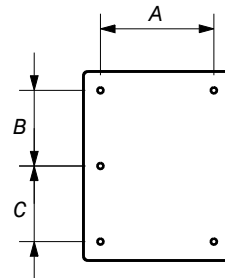


fig:3

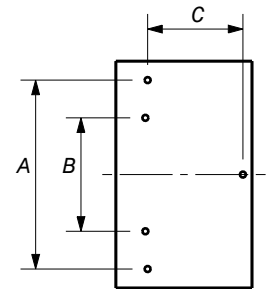


fig:4

CAN	A	B	C	D	LAYOUT
A	20	15	10	2.5	fig:1
B	34	12	6	3.5	fig:2
C	22.5	15	6.25	2.5	fig:2
D	17.5	8.75	8.75	0	fig:3
E	15	10	10	0	fig:3
L	25	15	13	0	fig:4

Dimensions in millimeters and are subject to change without notice.