

# MF 423-3-3D-FP SERIES

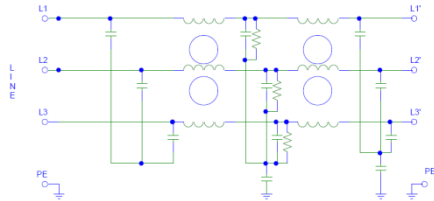


## Features

- Chassis Mount/Panel 3 Phase Filter 3 Wire
- Three Stage Filter
- Light Weight
- Compact
- Foot Print Design
- Superior Performance
- Shock Proof Terminals

## Technical Specification

- Maximum Operating Voltage: 440/520\*/600\* VAC
- Operating Frequency: 50/60Hz
- Rated Current: 7A to 100A
- High Potential test voltage:
  - L to G 2120VAC FOR 250V
  - L to L 1414VDC FOR 250V
- Overload Capability: 6 x Rated current for 8sec
- Temperature Range :-25 °C to 85 °c
- Earth Leakage Current : 1 mA max  
(Also available in low leakage Current)



## Application

- For UPS, Special purpose machines.
- Elevators
- CNC Machines
- HVAC
- Drives
- AC/DC Drives
- SCR Drives

## Presentation

Steel with Nickel Plating/Aluminium

## Mounting

Screw Mount or Panel Mount

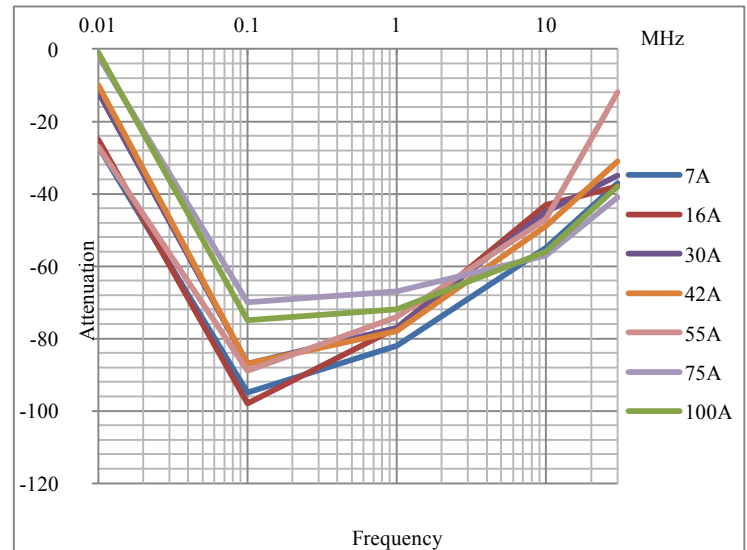
## Termination

Fastons or Cable or Screw

## How to Order

Part No	Rated Current	Case	Termination
MF 423-3-3D-FP	7A	FP Can-7A	Shock Proof Connector
MF 423-3-3D-FP	16A	FP Can-16A	Shock Proof Connector
MF 423-3-3D-FP	30A	FP Can-30A	Shock Proof Connector
MF 423-3-3D-FP	42A	FP Can-42A	Shock Proof Connector
MF 423-3-3D-FP	55A	FP Can-55A	Shock Proof Connector
MF 423-3-3D-FP	75A	FP Can-75A	Shock Proof Connector
MF 423-3-3D-FP	100A	FP Can-100A	Shock Proof Connector

## Insertion Loss



\*\* For Customised filter Contact our sales department